



# LEDBURY HUNT PONY CLUB

A new year and we have some new faces on our main committee. I would like to welcome Sophie Turpin, Claire Allen, Jenny Blades and Jennie Clements. They don't have specific roles (yet!!) but we look forward to their valuable input and ideas. If you would like to know more about the committee then do get in touch and next month I will be organising an open evening where you can come along and ask any questions regarding the branch, about activities, competitions, registering interest for areas, discussing new rules, getting a hat tagged, tests, training, whatever you need to know or don't realise you need to know!

A new year also brings a new parents rota. Next week a questionnaire will be going out asking you to choose two or more events to help out at over the course of the year. All events need to help to run and if we can't run the events we can't afford to run the branch. ALL parents are expected to help so if you don't choose you WILL be allocated two events.

## Dates

### February

- 7<sup>th</sup> Friendly Quiz Competition at Apperley Village Hall
- 14<sup>th</sup> Saturday Lesson at Moores Farm
- 16<sup>th</sup> Day Camp at Hartpury
- 17<sup>th</sup> Half Term rally at Moores Farm
- 19<sup>th</sup> Mounted Games Practise – The Chase
- 20<sup>th</sup> Training Day at Hartpury
- 26<sup>th</sup> Evening Student Led Lessons at Hartpury College

### March

- 7<sup>th</sup> Showjumping Rally at Highnam Court
- 14<sup>th</sup> Mounted Games Practise – The Chase
- 15<sup>th</sup> Sunday Lesson at Moores Farm
- 26<sup>th</sup> Evening Student Led Lessons at Hartpury College
- 28<sup>th</sup> Saturday Lesson at Moores Farm
- 31<sup>st</sup> Arena Eventing Rally at Lincomb



**Area 9  
Performance Day**

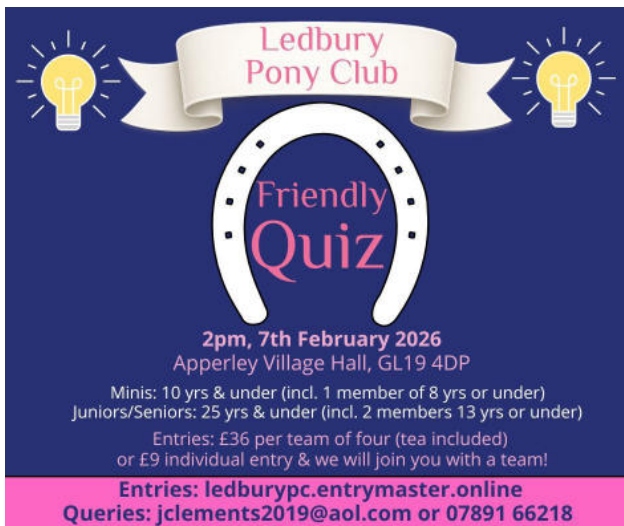
Hosted by Ledbury PC and Hartpury Equine  
Monday 16<sup>th</sup> February 2026 0930 – 1600hrs  
Led by Dr Jo Winfield with Equine Sport Coaching students

This day is designed with Tetrathletes and Eventers in mind (13yrs +)

- Pre-season preparation workshops focusing on:
  - Rider position – jumping focus on 'Margaret' the simulator\*
  - Rider Psychology – competition prep & managing focus between phases
  - Rider Nutrition
  - Strength & Conditioning
  - Cardio & Fitness

\*We will be classroom / gym based at the Sports Academy & Equine Centre. Participants should wear clothing suitable for exercise/being on the simulator, including bringing riding boots

£40 LHPC members  
£50 other A9 members



Our first event of the year kicks off with the Friendly Quiz. This is a great warm up competition for those wanting to go to Area competitions. This year we have some amazing prizes up for grabs which have been donated by Redpost who have given some Le Mieux merchandise, Pioneer Feeds in Ledbury, Treehouse Sporting Colours, Feedmarks and New Hunt. Look forward to seeing members there next weekend.

## News and Results

### Children's Meet at Houldey's

The Christmas holidays are always a great chance for members to get out on the hunting field and these holidays have been brilliant with good going and good weather. On 2<sup>nd</sup> January the Ledbury Hunt held a children's meet kindly hosted by the Houldey family at Hasefield. A great number of members turned out on a chilly day and all were able to enjoy with lead rein up to older members being catered for. There were plenty of jumps and opportunities to gallop across country.



### Area 7 Winter Triathlon Qualifier

One of our senior members made the trip to Walsall to compete at this tri. Emma-Jane came 9<sup>th</sup> in the senior girls class.

### Area 18 January Triathlon

Three of our members were due to compete at this tri but sadly the weather conditions forced a cancellation so they went for a run instead!!

### Area 9 Mounted Games Study Day

Held at Hartpury College Area 9 organised a mounted games study day showing which races would be at this years Area competitions. Our discipline manager Jenny Blades went along with her daughter and they got to have a go at the races and get lots of ideas to bring back to branch.





### STRUK Pony Club Team Friendly Series at David Broomes

Two of our junior members, Annabelle and Amber joined some of our friends from Malvern and Cotswold Vale pony clubs for a STRUK competition at the David Broome centre where they ran through every 2026 area and zone race. This was such a great experience as there are new races and equipment to get used to. Lots learnt and some great team work for 6th place.

### Area 10 Winter Tri Series 1 of 3

The first of the Area 10 winter Tri series was held in Monmouth on a very chilly Sunday. We had a few members competing over the various classes.

| <u>Open Girls</u>          | <u>Junior Boys</u>         | <u>Mini Boys</u>           | <u>Tadpole Girls</u>       |
|----------------------------|----------------------------|----------------------------|----------------------------|
| 8 <sup>th</sup> Seren W    | 5 <sup>th</sup> Ben O      | 12 <sup>th</sup> Oliver B  | 12 <sup>th</sup> Faye O    |
| 13 <sup>th</sup> Molly L   | Mixed Team 2 <sup>nd</sup> | Mixed Team 3 <sup>rd</sup> | Mixed Team 2 <sup>nd</sup> |
| Mixed Team 4 <sup>th</sup> | <u>Junior Girls</u>        | <u>Mini Girls</u>          | <u>Beanie Girls</u>        |
|                            | 9 <sup>th</sup> Molly M    | 2 <sup>nd</sup> Bethany H  | 11 <sup>th</sup> Sophie B  |
|                            | 12 <sup>th</sup> Jenny W   | Mixed Team 1 <sup>st</sup> | Mixed Team 3 <sup>rd</sup> |
|                            | 13 <sup>th</sup> Lexi W    |                            |                            |
|                            | Team 4 <sup>th</sup>       |                            |                            |

### Malvern PC Winter Tri

| <u>Beanie Girls Tri</u>  | <u>Tadpole Girls</u>      | <u>Minimus Girls</u>         |
|--------------------------|---------------------------|------------------------------|
| 6 <sup>th</sup> Sophie B | 11 <sup>th</sup> Faye O   | 3 <sup>rd</sup> Bethany H BR |
| <u>Junior Boys</u>       | <u>Junior Girls</u>       | <u>Senior Girls</u>          |
| 4 <sup>th</sup> Ben O    | 4 <sup>th</sup> Lexi W BR | 3 <sup>rd</sup> Seren W      |

### Area 9 Tri Series Leader Board

Well done to two members Bethany H and Ben O who top the leader boards in the mini girls and junior boys sections.

January has been rather a wet month but the nights are drawing out and spring doesn't feel too far away! The calendar is starting to fill and we will be making plans for Area competitions as well as the branch events. It won't be long till we are back at Gadbury and thoughts are already turning to camping camp as well as rallies and test days. Keep checking Entrymaster and make sure you get your entries in in plenty of time for organisers to know exactly who is attending.



## Competition & Area Training Dates

### February

- 1<sup>st</sup> Worcestershire Show Jumping at Gracelands
- 7<sup>th</sup> Croome Show Jumping at Hartpury
- 7<sup>th</sup> LHPC Friendly Quiz Competition at Apperley Village Hall
- 8<sup>th</sup> Beaufort Area Winter Tri Series
- 15<sup>th</sup> CVFH Show Jumping at Hartpury
- 15<sup>th</sup> Dressage Training with Jo Lees at Abbey Dressage
- 24<sup>th</sup> Pony Club Coaches Conference

### March

- 1<sup>st</sup> **Area Quiz hosted by Minchinhampton & Stroud**
- 22<sup>nd</sup> Dressage Training with Jo Lees at Abbey Dressage
- 22<sup>nd</sup> Winter Triathlon Championships at Grantham
- 22<sup>nd</sup> North Cotswold Arena Events at Unicorn
- 28<sup>th</sup>-30<sup>th</sup> Spring Championships at Addington

### April

- 3<sup>rd</sup> **Pony Racing at Cheltenham**
- 5<sup>th</sup> Wyre Forest Show Jumping at Bromyard
- 9<sup>th</sup> Minchinhampton Show Jumping at CCR
- 10<sup>th</sup> **Area Horse & Pony Care Andoversford**
- 11<sup>th</sup> OBH Show Jumping at Unicorn
- 11<sup>th</sup> Minchinhampton Triathlon at Dean Close
- 12<sup>th</sup> **Area Mounted Games**
- 19<sup>th</sup> Quiz Final at Loughborough University

### May

- 4<sup>th</sup> LHPC Two Phase at Hartpury
- 16<sup>th</sup>/17<sup>th</sup> LHPC Branch Tetrathlon
- 16<sup>th</sup>/17<sup>th</sup> Mounted Games Friendly at Three Counties
- 24<sup>th</sup> Area 9 Show Jumping at Rectory Farm
- 30<sup>th</sup> **Area Show Jumping at Moreton**
- Showground**
- 30<sup>th</sup>/31<sup>st</sup> Junior Home International Tetrathlon

