

PETERSFIELD PONY CLUB

MAIN ACHIEVEMENT BADGE

BUTTERFLIES & MOTHS

Name : _____

- Complete the multiple choice Quiz
- Complete the TWO diagrams
- Complete the Wordsearch
- Complete the Crossword



The Ultimate Butterflies and Moths QUIZ

What's the difference between a butterfly and a moth? Is it just a matter of looks? Take our Quiz and learn more about butterflies, moths and the differences between them.

Q1: How many pairs of wings do butterflies and moths have?

- 2 pairs 3 pairs 4 pairs 5 pairs

Q2: How many species of moths and butterflies are there in the UK (approx)?

- a) 10 moths/5 butterflies
- b) 100 moths/5 butterflies
- c) 500 moths/10 butterflies
- d) 2,500 moths/60 butterflies

Q3: When are butterflies most active?

- During the day At dusk Middle of the night Early morning

Q4: Which has the more slender body?

- Moths Butterflies Caterpillars

Q5: What order do moths and butterflies belong to?

- Hemiptera Coleoptera Diptera Lepidoptera

Q6: How wide are the Blue Morpho butterfly's wings?

- 2 in (5 cm) 3 in (8 cm) 5 in (13 cm) 6 in (15cm)

Q7: What number do the scales on the Eighty Eight butterfly form?

- 33 88 133 188

Q8: What colour are the Esmeralda butterfly's wings?

- Transparent Emerald green Ruby red Violet

Q9: What colour are African Cymotho butterflies?

- Red Green Blue Yellow

Q10: How many inches wide are the world's largest butterfly's wings?

- 5 in (13 cm) 8 in (20 cm) 10 in (25 cm) 12 in (30 cm)



Q21: Which butterfly has eyespots that may be used to scare away predators?

Monarch Common Buckeye Giant Swallowtail Painted Lady

Q22: How long does it take for a Monarch to grow from an egg to an adult butterfly?

One day One week One month One year

Q23: Butterflies live everywhere except which continent?

Antarctica South America Africa Europe

Q24: Which body part do butterflies use for taste?

Wings Feet Antenna Abdomen

Q25: Which of the following lists the correct order for a butterfly's life cycle?

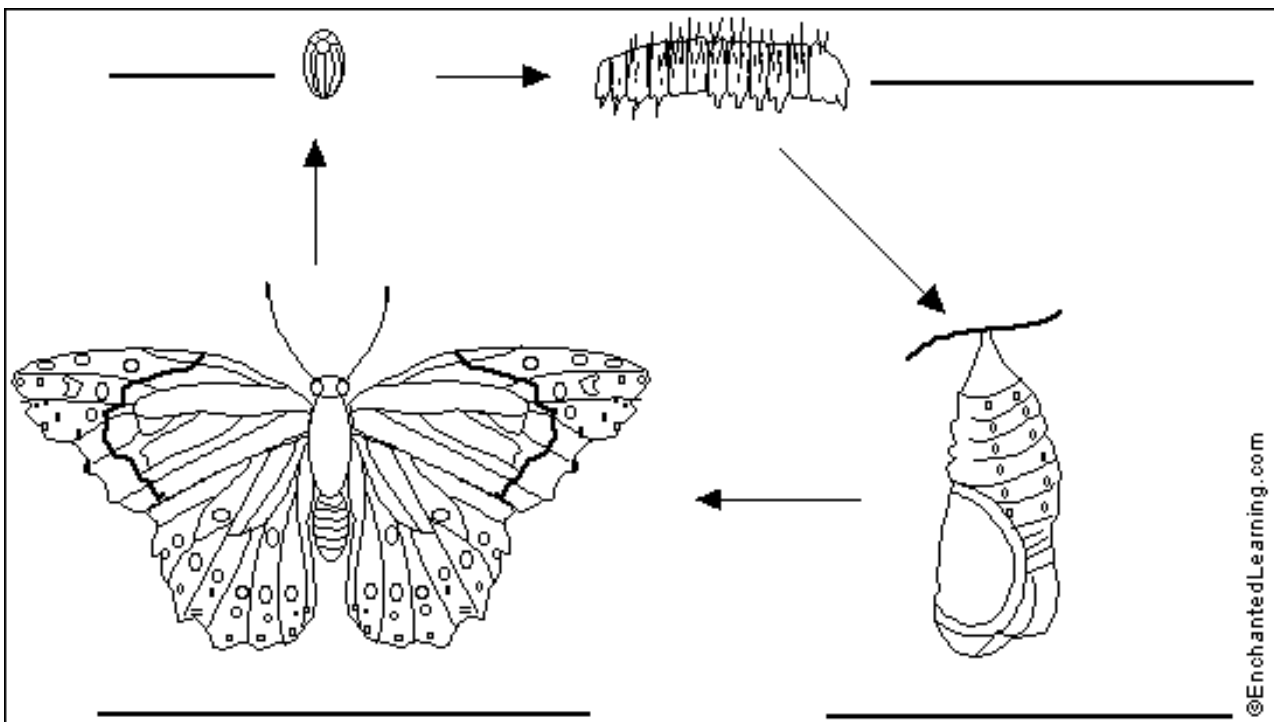
- a) Egg, caterpillar, chrysalis, adult
- b) Chrysalis, egg, caterpillar, adult
- c) Caterpillar, chrysalis, egg, adult
- d) Adult, caterpillar, chrysalis, egg



Label the Butterfly - Life Cycle Diagram

Butterflies undergo complete metamorphosis. The larva (caterpillar) hatches from an egg that the female usually lays on the underside of leaves. After growing, it enters the seemingly inactive pupal phase during which it forms a protective chrysalis and metamorphoses into a winged insect - the adult butterfly. After mating, the female lays eggs and the cycle begins again.

Read the definitions below, then label the butterfly life cycle diagram.



Adult - the winged adult which will mate and reproduce. Adults do not eat, they only sip liquids through a straw-like proboscis.

Larva - (also called the caterpillar) this stage hatches from the egg. The larva spends its time eating, growing and moulting (shedding its outgrown exoskeleton).

Pupa - the stage in a butterfly's life when it is encased in a chrysalis and undergoes metamorphosis into the adult, winged form.

Egg - the tiny orb laid by a female butterfly. Eggs are usually laid on the underside of leaves – they hatch into larvae.

Label the Butterfly

Read the definitions, and then label the diagram below.

Definitions

Abdomen - The abdomen is the segmented tail area of an insect that contains the heart, Malpighian tubules, reproductive organs, and most of the digestive system.

Antenna - An antenna is a sensory appendage that is attached to the head of adult insects. Antennae are used for the sense of smell and balance. Butterflies have two antennae with clubs at the end.

Compound Eye - Insect compound eyes are made up of many hexagonal lenses.

Fore wing - The fore wings are the two upper wings.

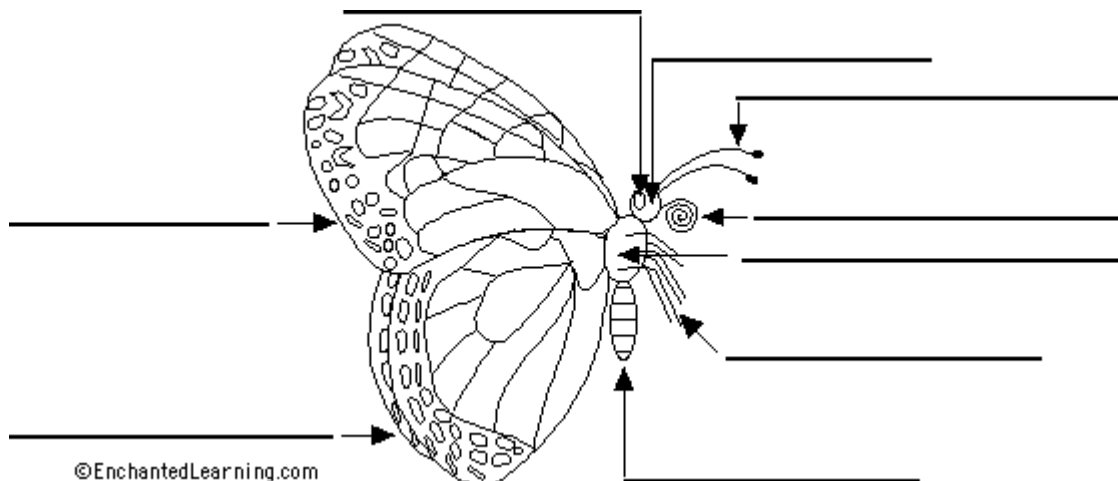
Head - The head is the part of the insect that contains the brain, two compound eyes, the proboscis, and the pharynx (the start of the digestive system). The two antennae are attached to the head.

Hind Wing - The hind wings are the two lower wings.

Leg - All adult butterflies have six legs. The two forelegs of some butterfly species are tiny.

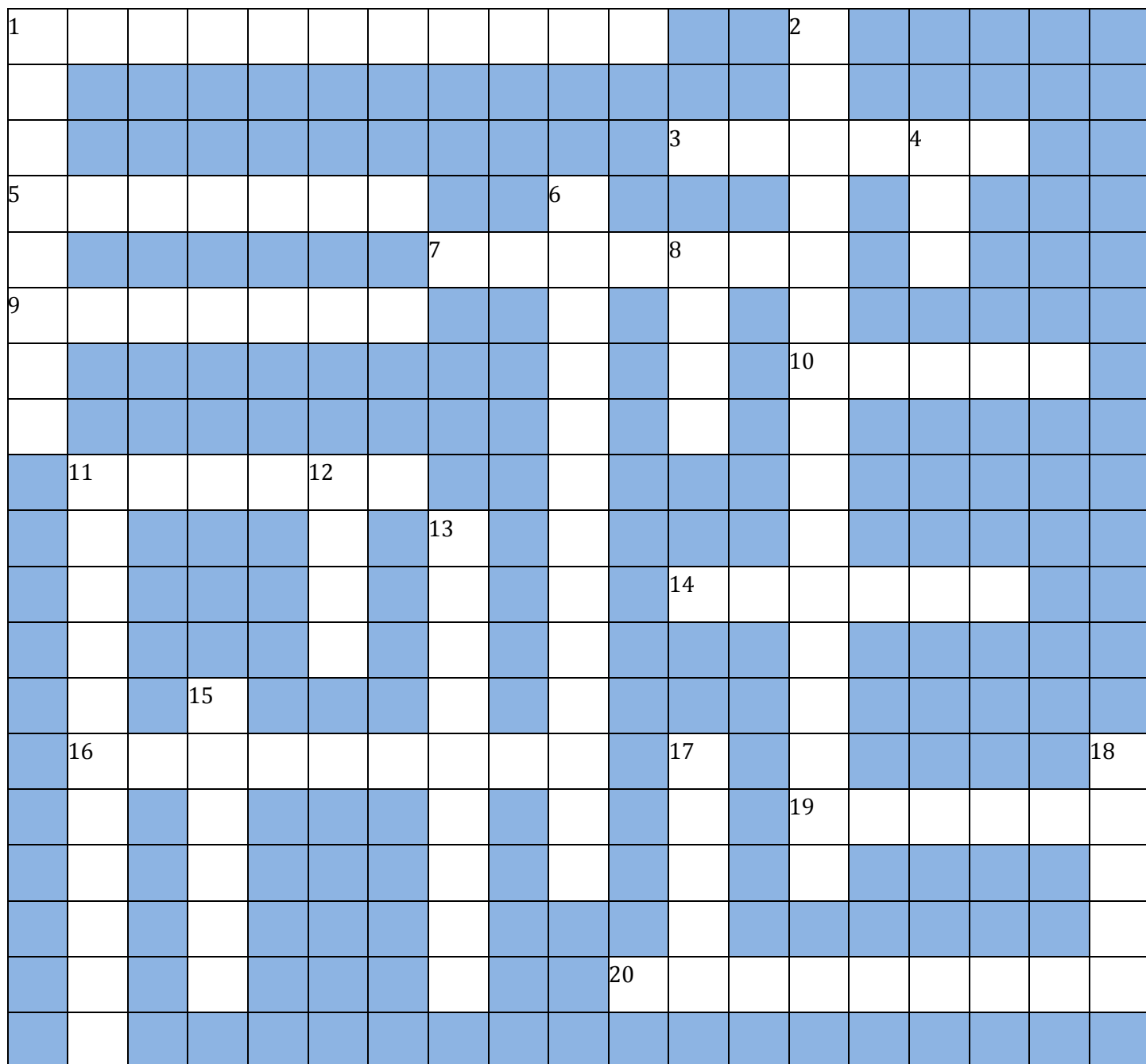
Proboscis - Adult butterflies sip nectar and other liquids using a spiral, straw-like proboscis located on their head.

Thorax - The thorax is the body section between the head and the abdomen. The legs and wings attach to the thorax.



BUTTERFLIES & MOTHS

CROSSWORD



Across

- 1 The Order that butterflies and moths belong to
- 3 These make up a butterfly's wing. They provide the colour and pattern of the wing
- 5 The National butterfly of Japan
- 7 A pattern on a wing that resembles an eye
- 9 Butterflies are -----, meaning they fly during the day
- 10 They are needed to fly
- 11 A type of butterfly. The "large" is now extinct, but the "small" is still quite common
- 14 Another name for the body
- 16 The coiled straw like sucking tube mouthparts of a butterfly
- 19 Butterflies and moths can be described as these
- 20 These are the fastest butterflies at up to 30 mph

Down

- 1 A favourite purple flower for butterflies
- 2 With a wing span of 6" this butterfly is one of the largest in North America
- 4 The first stage of a butterfly's life cycle
- 6 Change in form in development, as in the change between caterpillar and butterfly
- 8 The stage in a butterfly's life when it's encased in a chrysalis
- 11 The second stage of a butterfly
- 12 A moth has them, but a butterfly doesn't
- 13 Word that describes the four stages of butterfly development
- 15 The third stage of a moths cycle
- 17 Another name for 11 down
- 18 The moth with the widest wingspan 30cm (1ft)

BUTTERFLIES & MOTHS

WORD SEARCH

	R	Q	L				N	L			J	Q	B						
	L	A	R	V	A		M	O	T	H		Y	A	Y	Z	M			
C	O	P	P	E	R	S	J	S	A	B		W	I	N	G	S	E	C	
L	O	N	G	W	I	N	G	Y	H		I	N	S	E	C	T	T	H	
M	O	N	A	R	C	H	C	A	T	E	R	P	I	L	L	A	R	A	R
S	W	A	L	L	O	W	T	A	I	L	S	L	K	P	M	S	G	M	Y
B	C	H	P	A	I	N	T	E	D	L	A	D	Y	R	I	K	V	O	S
F	R	I	T	I	L	L	A	R	Y	E	G	G	P	O	L	I	S	R	A
F	C	X	H	A	I	R	S	T	R	E	A	K	U	B	K	P	N	P	L
A	N	T	E	N	N	A	E		C	D		S	P	O	W	P	E	H	I
S	U	L	P	H	U	R			O	G		A	S	E	E	C	O	S	
W	H	I	T	E	S				C	Q			C	E	R	T	S	V	
B	R	O	W	N	S				O	L			I	D	X	A	I	A	
	B	L	U	E	S				O	Y			S	K	R	R	S		
		C	I	J					N	J				G	A	M			

Antennae

Blues

Browns

Caterpillar

Chrysalis

Cocoon

Coppers

Nectar

Hairstreak

Insect

Larva

Longwing

Metamorphosis

Milkweed

Monarch

Moth

Fritillary

Proboscis

Pupa

Skipper

Sulphur

Swallowtail

Whites

Wings

Egg

Painted Lady